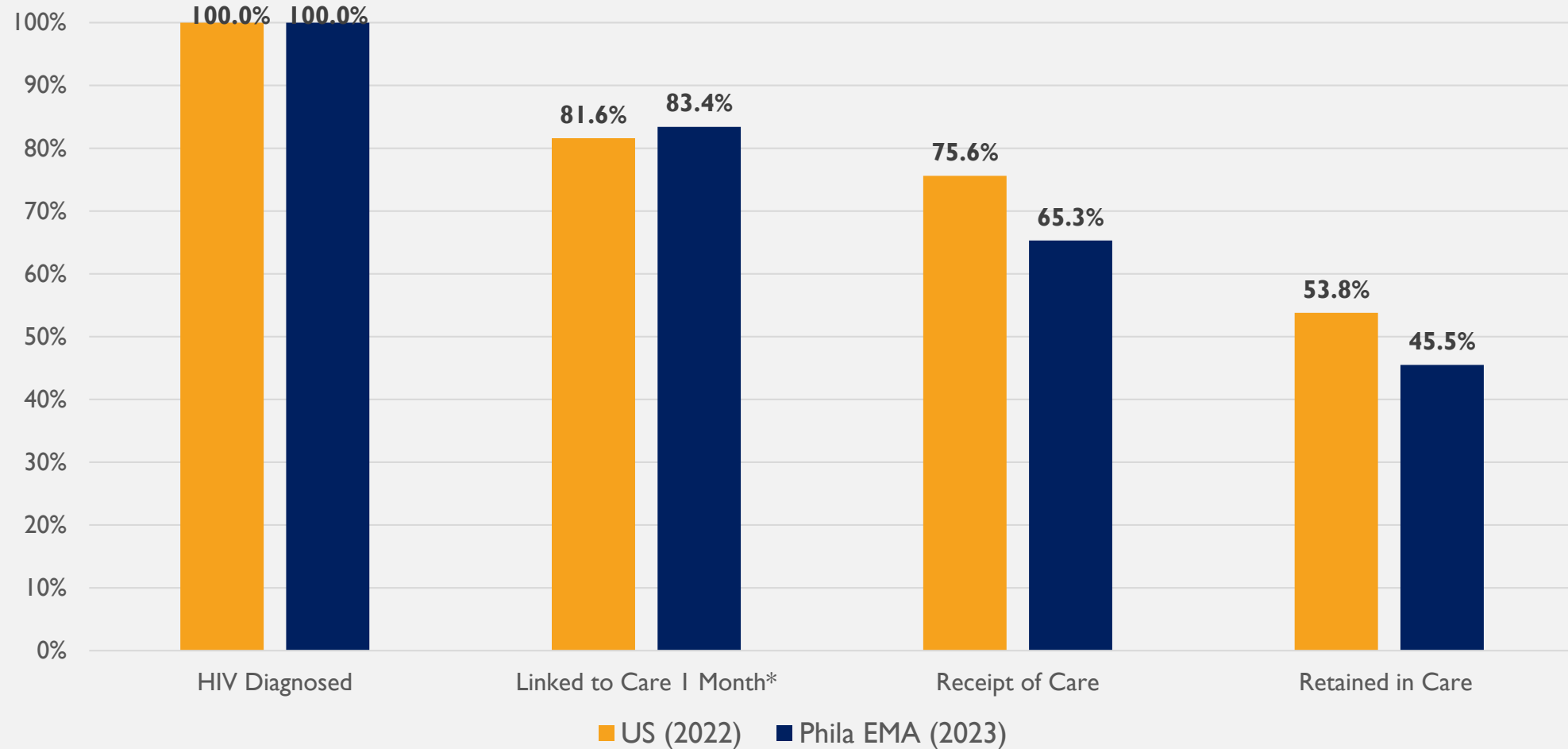


# PRIORITY SETTING 2025









*For the Comprehensive Planning Committee*

*Wednesday, February 19<sup>th</sup> from 2:00 – 4:00 p.m.*

## 2023 EMA CARE CONTINUUM



## ENDING THE HIV EPIDEMIC PROGRESS

GOAL:	BASELINE							Progress	2025 Target	2030 Target
	2017	2018	2019	2020	2021	2022	2023			
Reduce new HIV infections by 75% in five years and by 90% in ten years	440	430	410	280*	280*	310*		 STABLE	(118)	(47)
Increase knowledge of status to 95% by 2025	90.9%	90.9%	91.0%	91.2%	91.4%	91.6%		 STABLE	(95.0%)	
Decrease confirmed HIV diagnoses to 25% by 2025 and 8% by 2030	509	435	447	341	374	391	378	 IMPROVING	(127)	(41)
Increase linkage to care to 95% by 2025	86.3%	86.1%	81.3%	82.5%	81.4%	77.0%	86.0%	 IMPROVING	(95.0%)	
Increase viral suppression to 95% by 2025**	72.3%	70.1%	72.3%	67.3%	70.1%	73.5%	74.4%	 IMPROVING	(95.0%)	
Decrease stigma among PWDH by 50%, Median**		32.9	31.0	31.7	28.4	30.4		 NOT IMPROVED	(18.8)	
Decrease Unhoused PWDH by 50% <sup>†</sup>	9.9%	13.6%	8.1%	6.7%	13.5%	11.7%		 IMPROVING	(4.9%)	
PrEP coverage <sup>§</sup>			37.3%	36.0%	41.6%	50.8%	51.3%	 IMPROVING	(50.0%)	

Information from the 2025 Epi Update from DHH

# NHBS (NATIONAL HIV BEHAVIORAL SURVEILLANCE): TRANSGENDER WOMEN

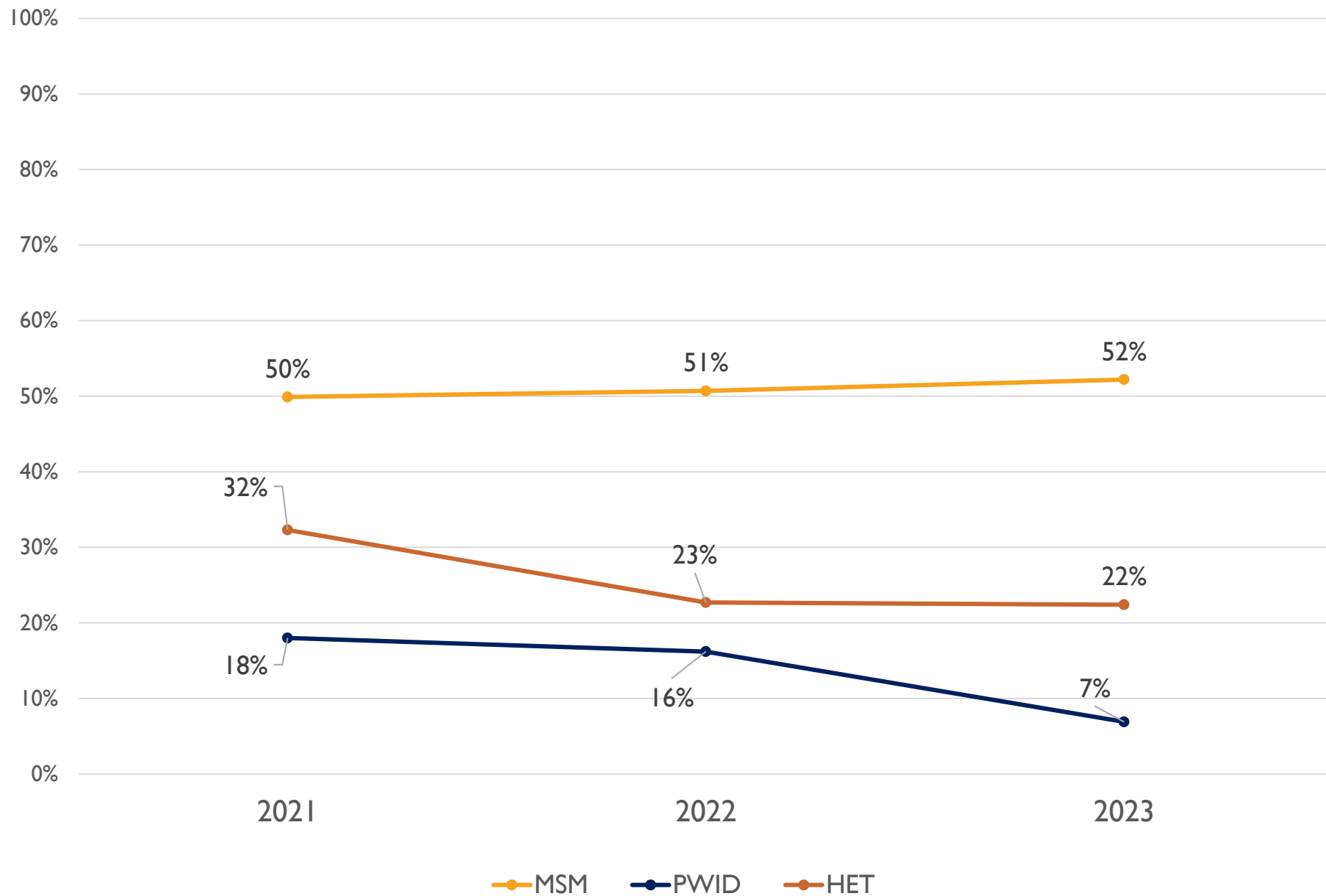
- Pilot cycle began in 2019 and second cycle in 2023/2024
  - 266 interviews completed
  - Ages ranged from 18 to 76; average age was 36
  - 62% NH Black, 17% Hispanic/Latinx, 14% NH White
  - 37.0% self-reported HIV+
- Factors that may be related to HIV transmission include:
  - Unstable Housing (31%)
  - Living below the FPL (65%)
  - Discrimination (45%)
  - Abuse (31% verbal; 19% physical)

Note: HIV prevalence for transgender women is 2.1% in Philadelphia. Mode of transmission is as follows: 81% sexual transmission & 17.9% PWID

# NEW HIV DIAGNOSES BY MODE OF TRANSMISSION

*Information from the 2025  
Epi Update from DHH*

Trends in Diagnoses by Transmission



## CONSIDERING AGE

- In 2023:
  - There was a 20% increase for new diagnoses in people aged 12-24
  - People aged 30-49 accounted for 53% of late diagnoses in the Philadelphia EMA
  - People aged 50+ accounted for 57.3% of total HIV cases in the EMA
- In 2021, concurrent diagnoses for people 50+ had significantly risen from 19% in 2019 to 32% in 2021

## CONSIDERING MODE OF TRANSMISSION

- In 2023, MSM made up the largest percentage of newly diagnosed individuals (58.2%) and total PWDH percentage (40%) within the Philadelphia EMA
  - *The highest proportion of late diagnoses was also amongst MSM (44%)*
  - *From 2022-2023, there was an 11% increase in new diagnoses amongst MSM*
- Regarding PWID:
  - New diagnoses has recently decreased (from 64 cases in 2022 to 27 cases in 2023)
  - Majority of cases are between ages 30-49 (63%) at diagnoses, MSM (70.4%), and NH White (52.3%)

## CONSIDERING RACE / ETHNICITY

- In 2023, NH Black individuals accounted for the highest percentage of those newly diagnosed (53%) as well as total HIV prevalence at 56.2%
  - *NH Black individuals also saw the highest rate of late diagnoses at 47%*
- Trends in stigma scores & homelessness were highest amongst Hispanic/Latinx PWDH from 2021-2022
- New diagnoses rate per 100,000 population by race/ethnicity:
  - 38.7 / 100,000 NH Black individuals
  - 25.9 / 100,000 Hispanic/Latinx individuals
  - 11.3 / 100,000 NH White individuals



## CONSIDERING FINANCES / INSURANCE

- According to 2023 Census Data, around 11.9% of people in the EMA are below the FPL – this is highest in Philadelphia at 22%
- In 2022, 91.2% of RWHAP clients were insured → 8.8% were not insured
  - 51.8% through Medicaid
  - 18.9% through Medicare
  - 13% through an employer
  - 4.2% through private insurance
  - 3.1% through another way
  - 0.2% through military

AIDS UNITED / LAMBDA LEGAL:  
2025 THREAT TALK

## HEALTHCARE THREATS

At risk in Project 2025:

- RESTRUCTURING FEDERAL HEALTH CARE AGENCIES
- DEFUNDING CDC/HHS
- AFFORDABLE CARE ACT
- PrEP / TESTING CAMPAIGNS
- SYRINGE EXCHANGE PROGRAMS
- DEI

## **LGBTQ+ THREATS**

At risk in Project 2025:

- **FEDERAL, HETERONORMATIVE LANGUAGE**
- **GENDER AFFIRMING CARE**
- **QUEER PROTECTIONS / ERASURE**
- **DATA COLLECTION**

## **IMMIGRATION**

At risk in Project 2025:

- HIV OR LGBTQ+ ASYLUM
- PUBLIC BENEFITS FOR IMMIGRANTS

## **REPRODUCTIVE HEALTHCARE**

At risk in Project 2025:

- SEXUAL HEALTH EDUCATION
- MEDICATIONS THROUGH MAIL

# AMBULATORY OUTPATIENT CARE

Outpatient/Ambulatory Health Services provide diagnostic and therapeutic-related activities directly to a client by a licensed healthcare provider in an outpatient medical setting.

***Allowable activities include:***

- Medical history taking
- Physical examination
- Diagnostic testing (including HIV confirmatory and viral load testing), as well as laboratory testing
- Treatment and management of physical and behavioral health conditions
- Behavioral risk assessment, subsequent counseling, and referral
- Preventive care and screening
- Pediatric developmental assessment
- Prescription and management of medication therapy

## **2022 Consumer Survey Data**

- 12% of respondents had trouble accessing HIV medical care in the previous 12 months (it was also the most accessed service at 53.81%)
- Nearly 40% of respondents reported at least one comorbidity
- Incarceration since HIV diagnosis (19.4%)
- About 1 in 4 respondents did not always feel comfortable talking to their medical provider about personal / sensitive issues

## **WORTH NOTING**

- **Program Guidance:** Emergency room visits are not allowable costs under this category
- According to 2022 data, 51.8% of RW Clients are insured through Medicaid
- In 2021, PWID & PWID/MSM only 50.4% of individuals were virally suppressed, which was the lowest rate amongst priority populations
- As determined in August 2023, all RW outpatient/ambulatory sites provide telehealth options

# MEDICAL CASE MANAGEMENT

Medical Case Management (MCM) is the provision of a range of client-centered activities focused on improving health outcomes in support of the HIV care continuum.

## ***Key activities include:***

- Assessment of service needs
- Development and re-evaluation (every 6 months) of an individualized care plan
- Client monitoring and advocacy
- Treatment adherence counseling to ensure readiness to adhere to complex HIV treatments

## **2022 Consumer Survey Data**

- Most respondents (84.6%) had a MCM, and 82.1% were satisfied with their MCM
- MCM was the third most accessed service at 46.61%

## **WORTH NOTING**

- **Program Guidance:** MCM goal is to improve health care outcomes with a focus on ensuring readiness and adherence to HIV treatment
- 1,680 intakes completed through CSU in 2023 – Emergencies and other priority populations immediately referred to MCM providers
- Consumer Feedback groups meet quarterly to improve MCM services as part of QIPs
- In 2024, 62.2% of new MCM clients were linked to medical care



# DENTAL CARE

Oral Health Care activities include outpatient diagnosis, prevention, and therapy provided by dental health care professionals, including general dental practitioners, dental specialists, dental hygienists, and licensed dental assistants.

## **2022 Consumer Survey Data**

- 7.63% reported needing but not receiving dental services
- Dental Care was the second most accessed service at 50% in the last 12 months

## **WORTH NOTING**

- From FY2022 to FY2023, there was a 3% increase in dental visits